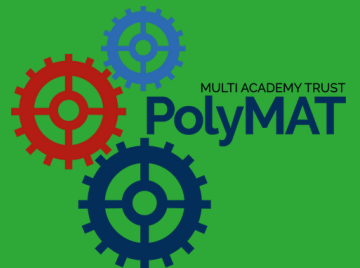
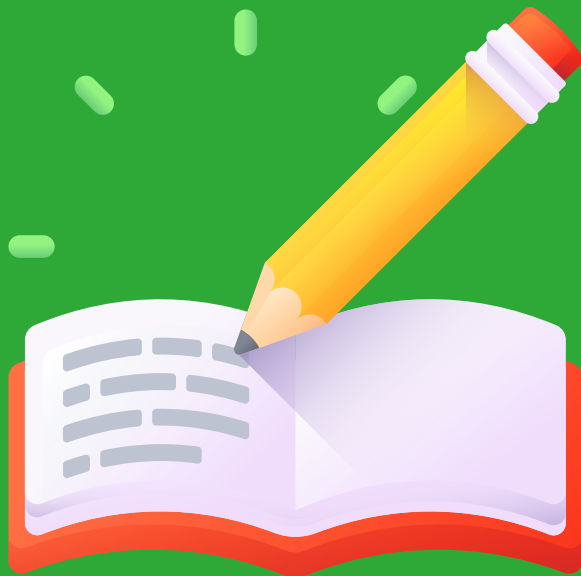




Woolwich Polytechnic  
School for Girls

# HOMEWORK GUIDE



# HOMework AT WPSFG

Here at Woolwich Poly School for Girls, homework plays a key role in your child's learning. Our aim is for homework tasks to consolidate and build upon lessons taught, with knowledge and skills at the forefront.

In Key Stage 3, students have revision tasks, practice tasks or creative tasks set as homework. In Key Stage 4, students will have revision and practice tasks that will prepare them for their exam course.

Revision homework will be creating and using a revision resource, such as revision mind maps or flash cards etc. Practice and Creative homework tasks may take different forms. For example, exam style questions, short multiple practice questions, online task completion, research, create a model or presentation.

Students will be set homework as per the School Homework timetable below:

<b>KS3 Homework setting timetable</b>	<b>Year 7</b>	<b>Year 8</b>		<b>Year 9</b>
<b>Maths</b> (set weekly)	<b>Tuesday</b>	Side X <b>Tuesday</b>	Side Y <b>Monday</b>	<b>Tuesday</b>
<b>Science</b> (set weekly)	<b>Thursday</b>	Side X <b>Thursday</b>	Side Y <b>Wednesday</b>	<b>Thursday</b>
<b>Week A subjects</b> (for all year groups)	<b>Art</b> (if this is a double lesson) <b>Computing</b> <b>Drama</b> <b>DT</b> <b>History</b> <b>Music</b> (class teacher will choose which day of this week to set the homework)			
<b>Week B subjects</b> (for all year groups)	<b>Art</b> (if this is a double lesson) <b>English</b> <b>French</b> <b>Geography</b> <b>PE</b> (class teacher will choose which day of this week to set the homework)			

For Year 8, Maths and Science homework will be set on different days based on their classes. For example, if a student is in Maths class 8x/Mat2 they will have Maths homework set on a Tuesday every week. Whereas, if a student is in 8y/Mat2 they will have Maths homework set on a Monday.

<b>Year 10</b>	<b>Homework to be set weekly for...</b>
<b>Monday</b>	<ul style="list-style-type: none"> <li>• English</li> <li>• Maths</li> <li>• Science y side</li> <li>• Physics y side</li> <li>• Option block A subjects</li> </ul>
<b>Tuesday</b>	<ul style="list-style-type: none"> <li>• Chemistry y side</li> <li>• Science x side</li> <li>• Biology x side</li> <li>• Option Block C subjects</li> </ul>
<b>Wednesday</b>	<ul style="list-style-type: none"> <li>• Chemistry x side</li> <li>• Option Block B subjects</li> </ul>
<b>Thursday</b>	<ul style="list-style-type: none"> <li>• Physics x side</li> </ul>
<b>Friday</b>	<ul style="list-style-type: none"> <li>• Biology y side</li> </ul>

<b>Year 11</b>	<b>Homework to be set weekly for...</b>
<b>Monday</b>	<ul style="list-style-type: none"> <li>• Science y classes</li> <li>• Physics y classes</li> <li>• Options Block A subjects</li> </ul>
<b>Tuesday</b>	<ul style="list-style-type: none"> <li>• Science x classes</li> <li>• Physics x classes</li> <li>• Biology y classes</li> <li>• English</li> <li>• Option block B subjects</li> </ul>
<b>Wednesday</b>	<ul style="list-style-type: none"> <li>• Maths</li> <li>• Chemistry x classes</li> <li>• Option block C subjects</li> </ul>
<b>Thursday</b>	<ul style="list-style-type: none"> <li>• Chemistry y classes</li> </ul>
<b>Friday</b>	<ul style="list-style-type: none"> <li>• Biology x classes</li> </ul>

# EXPECTATIONS

Class teachers will set practice, revision or creative homework tasks as per the homework timetable. They will reward and praise good homework and follow up poor or incomplete homework. Teachers will give individual or class feedback on the homework tasks, and this will tie into lessons.

Students should engage with the homework tasks and complete them to the best of their ability.

We expect students to:

- Note down homework, and its due date, in their contact diary.
- Ask the class teacher if they have any questions about the homework.
- Speak to the class teacher if there are any issues or queries about the homework set.
- Attend homework club at school if they need more support or somewhere quiet to complete homework.
- See their class teacher to find out about missed homework if they are absent.



Woolwich Polytechnic  
School for Girls



## Be Ready

We help ourselves to be ready to learn, achieve and succeed

## Be Respectful

We show respect to ourselves and our community

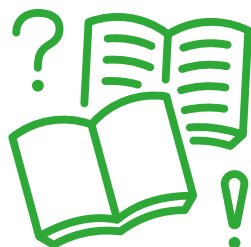
## Be Safe

We keep ourselves and others safe at all time

# HOW TO SUPPORT YOUR CHILD WITH HOMEWORK

Below are some tips, taken from the Nemours Kids Health website, on how to support your child with homework.

- **Set up a homework-friendly area.** Make sure your child has a well-lit place to complete homework. Otherwise, your child can attend homework club at school.
- **Schedule a regular study time.** Some students work best in the afternoon, following a snack and rest period; others may prefer to wait until after dinner.
- **Help them make a plan.** On heavy homework nights encourage your child to break up the work into manageable chunks. Create a work schedule for the night if necessary and take time for a 15-minute break every hour, if possible.
- **Keep distractions to a minimum.** This means no TV, loud music, or phone calls. (Occasionally, though, a phone call to a classmate about an assignment can be helpful.)
- **Make sure students do their own work.** They won't learn if they don't think for themselves and make their own mistakes. Parents/carers can make suggestions and help with directions. But it's a student's job to do the learning.
- **Be a motivator and monitor.** Check their contact diary and ask about tasks that are due in that week. Give encouragement, check completed homework, and make yourself available for questions and concerns.
- **Praise their work and efforts.** Let your child know when you are proud of them and their efforts and achievement. You could also stick good exam/assessment scores or art projects on the fridge and mention academic achievements to relatives.
- **Problems with homework, get help.** Direct your child to speak to their class teacher if they don't understand the homework task. If there are continuing problems, ask to speak with the relevant Head of department.



# WHO TO CONTACT?

If you have any queries about the homework or for further subject specific support, please contact the relevant Head of Department.

If there are wider concerns, please contact your child's form tutor in the first instance.

## HEAD OF DEPARTMENT CONTACT DETAILS:



**Maths - Mr Rahman**  
marahman@woolwichpolygirls.co.uk



**English - Ms Adkins**  
madkins@woolwichpolygirls.co.uk



**Science - Ms Sellars**  
msellars@woolwichpolygirls.co.uk



**Computing - Ms Allen**  
jallen@woolwichpolygirls.co.uk



**French - Ms Alamu**  
palamu@woolwichpolygirls.co.uk



**Drama - Ms Weston**  
nweston@woolwichpolygirls.co.uk



**PE - Ms Hodgson**  
zhodgson@woolwichpolygirls.co.uk



**Music - Ms Stamp**  
jstamp@woolwichpolygirls.co.uk



**Art - Ms Lyle**  
slyle@woolwichpolygirls.co.uk



**DT - Ms Almond**  
lalmond@woolwichpolygirls.co.uk



**History and Geography - Ms Baggaley**  
jbaggaley@woolwichpolygirls.co.uk



Woolwich Polytechnic  
School for Girls

# ARE YOU READY?

DO YOU HAVE EVERYTHING YOU NEED IN THE  
RIGHT PLACE?



CONTACT DIARY



HOMEWORK DONE



LANYARD ON



BOOKS & KNOWLEDGE  
ORGANISER



PE KIT



TOPPED UP DINNER  
MONEY/BROUGHT PACKED LUNCH



REFILLABLE WATER  
BOTTLE



PHONE SWITCHED OFF  
AND PUT AWAY

HERE AT WOOLWICH  
POLYTECHNIC SCHOOL  
FOR GIRLS WE WANT  
EVERYONE TO FEEL  
WELCOMED, SEEN,  
HEARD, VALUED, AND  
SUPPORTED





Woolwich Polytechnic  
School for Girls

